

Failsafe On/Off Actuator

Features

- Reversible rotation
- Multi-choice of rotation angle



Specification

Power supply:

VA-DA1 .FE 24Vac/dc

VA-DA2.FE 230Vac

Frequency 50 - 60Hz

Max. power consumption:

VA-DA1.FE

Running 6W

Holding 2.5W

VA-DA2.FE

Running 6.5W

Holding 2.5W

Drive times:

Running 75 seconds

Spring 20 seconds

Control signal On/off

Angle of rotation:

0° - 93° mechanical (max.)

5 - 85° Limit angle (5° increment)

Aux. switch rating 24V @ 3(1.5)A

Ambient:

Temperature -30°C to +50°C

RH 5 to 95% RH

Max sound power:

Motor 50 dB(A)

Spring 62 dB(A)

Protection IP54

Protection class II

Conformity CE

Country of origin Germany

Product Codes

VA-DA1.FE

24Vac/dc Failsafe 15Nm on/off actuator

VA-DA1.FSE

24Vac/dc Failsafe 15Nm on/off actuator, with end switches

VA-DA2.FE

230Vac Failsafe 15Nm on/off actuator

VA-DA2.FSE

230Vac Failsafe 15Nm on/off actuator, with end switches

Technical Overview

The VA-DAFE range of actuators require 24Vac/dc supply (VA-DAFE) or 230Vac (VA-DA2FE) and a on/off control signal input. They are available in 15Nm torque rating and can have auxiliary switch options fitted. The spring return operates when the supply voltage is interrupted.

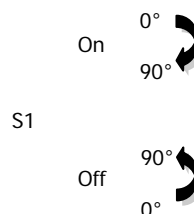
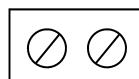
The direction of rotation can be reversed.

Installation

1. Ensure that all power is disconnected before carrying out any work on the VA-DAFE.
2. Maximum cable is 2.5mm², care must be taken not to over tighten terminals.
3. Attach the actuator to the damper spindle, finger tighten the nuts on the V-clamp.
4. Fix the anti-rotation strap to the back of the actuator (bend if required).
5. Move the damper to the closed position.
6. Using the manual override push button, turn the clamp until the actuator is in the correct position.
7. Tighten the V-clamp.
8. If the damper has no fixed stops of its own, the angle of rotation / working range can be adjusted mechanically by re-positioning the adapter in 5° steps. The adapter can be released by simply pressing the clip at the base of the actuator (see page 3).
9. Undo the screw on the cover of the actuator and remove the cover.
10. Fit the M20 converter into the back of the actuator.
11. Terminate the cores at the terminal block (see page 3), leaving some slack inside the unit.
12. Ensure that the voltage is within the specified tolerances.
13. Replace the lid after the electrical connections have been made.

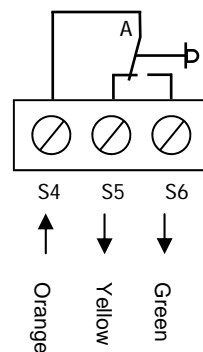
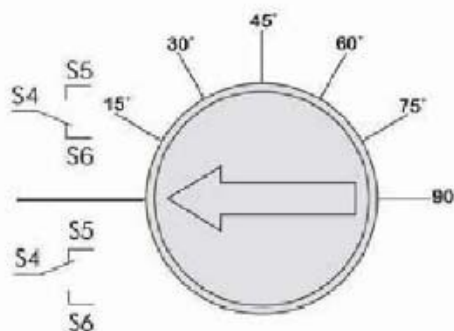
Connections

24V and 230V



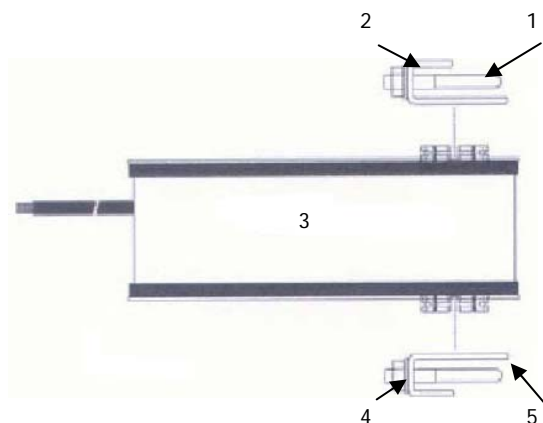
Auxiliary switches

To adjust the auxiliary switches, turn the screw from 0° to 90° according to the scale.



Changing Direction of Rotation

- 1 Release secure ring
- 2 Remove adapter
- 3 Reverse actuator
- 4 Re-insert adapter
- 5 Re-fit secure ring



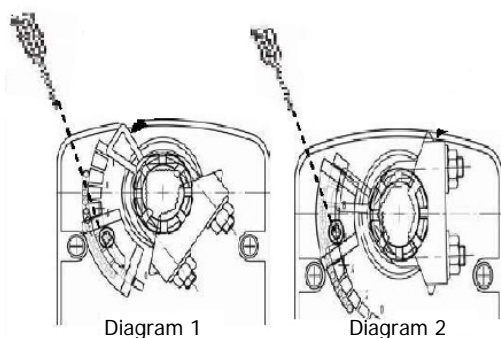
Changing Angle of Rotation

For 5° to 45° adjustment
(Diagram 1)

- 1 Loosen screw of the mechanical limiter plate.
- 2 Move the limiter plate to the appropriate position.
- 3 Tighten the screw.

For 45° to 85° adjustment
(Diagram 2)

- 1 Release the secure ring of the adapter.
- 2 Remove the adapter and turn negative 45° as shown.
- 3 Insert adapter and secure the adapter ring.
- 4 Loosen screw of the mechanical limiter plate.
- 5 Move the limiter plate to the appropriate position.
- 6 Tighten the screw.



Dimensions

